

KSE-100: Formation suggests consolidation to continue

- The index's formation suggests consolidation is likely to continue. Critical supports are at 11,818 points (trendline) and 11,767 points (200-DMA).
- The Stochastic Oscillator maintains its steady downtrend and is gradually approaching the oversold region while the RSI has shown weakness as well.
- We maintain our stance of accumulating on weakness.



First support 11,793 points, second support 11,700 points;
First resistance 11,965 points, second resistance 12,035 points

Analysis and Overview:

The index opened on a positive note however levels failed to hold and the index traded most of the session in the red, closing on a negative note. Volumes continued to decline and stood at 67.06 mln – down by 11.30%. Although the index registered a higher high, it failed to sustain itself. The resultant formation suggests consolidation is likely to continue. Critical supports are at 11,818 points (trendline) and 11,767 points (200-DMA).

The Stochastic Oscillator maintains its steady downtrend and is gradually approaching the oversold region while the RSI has shown weakness as well. On the other hand, the MACD maintains its uptrend as well as buy signal.

We maintain our stance of accumulating on weakness.

The first support is at 11,793 points and the second support is at 11,700 points. The first resistance is at 11,965 points and the second resistance is at 12,035 points.

For 31 January, 2012

Aiyaz M. Hassan
 aiyaz.hassan@kasb.com
 KASB Securities Limited
 Ph#: (9221) 111 222 000 Ext: 379

KSE-100 Index: Key Highlights

	30-Jan	Change
Open	11,976.85	16.74
High	12,000.13	40.02
Low	11,850.49	-109.62
Close	11,883.01	-77.21
Volume	67,056,769	-11.30%

Source: KSE

Key Technical Indicators

Date	30-Jan	27-Jan	Chg
30-DMA	11404	11377	26.66
50-DMA	11433	11433	-0.61
200DMA	11767	11767	0.07
9-D RSI	65.73	71.79	-6.06
14-D RSI	63.32	67.05	-3.73
25-D RSI	58.26	60.21	-1.95
SO* - %K	49.76	66.02	-16.26
SO* - %D	63.78	76.31	-12.53
SO View	Sell	Sell	

Source: KASB Technical Research

Synopsis

Stock	Recommendation
PTC	Buy on Weakness
PSO	Buy
POL	Buy on Weakness
OGDC	Buy
PPL	Buy on Weakness
NML	Buy on Weakness
NBP	Buy on Weakness
MCB	Buy on Weakness
DGKC	Sell on Strength
LUCK	Sell on Strength
FFBL	Buy on Weakness
ENGRO	Buy on Weakness

Source: KASB Technical Research

Pivot Analysis

	CLOSE	STRATEGY	S3	S2	S1	PIVOT	R1	R2	R3	Lower Limit	Upper Limit
ABL	60.47	Buy on Weakness	58.58	59.29	59.88	60.59	61.18	61.89	62.48	57.45	63.49
AHCL	28.01	Buy on Weakness	26.92	27.41	27.71	28.20	28.50	28.99	29.29	26.61	29.41
AICL	49.29	Buy on Weakness	47.88	48.44	48.87	49.43	49.86	50.42	50.85	46.83	51.75
AKBL	10.35	Buy on Weakness	9.67	9.98	10.17	10.48	10.67	10.98	11.17	9.35	11.35
APL	436.96	Buy	415.04	422.52	429.74	437.22	444.44	451.92	459.14	415.11	458.81
ATRL	117.34	Buy on Weakness	110.71	113.86	115.60	118.75	120.49	123.64	125.38	111.47	123.21
BAFL	12.36	Buy on Weakness	11.56	11.75	12.06	12.25	12.56	12.75	13.06	11.36	13.36
BOP	5.68	Buy on Weakness	5.05	5.29	5.48	5.72	5.91	6.15	6.34	4.68	6.68
DGKC	22.99	Sell on Strength	22.01	22.42	22.71	23.12	23.41	23.82	24.11	21.84	24.14
DOL	4.00	Buy on Weakness	3.84	3.89	3.95	4.00	4.06	4.11	4.17	3.00	5.00
ENGRO	117.13	Buy on Weakness	112.27	114.39	115.76	117.88	119.25	121.37	122.74	111.27	122.99
FABL	9.00	Buy on Weakness	8.46	8.71	8.85	9.10	9.24	9.49	9.63	8.00	10.00
FATIMA	21.42	Buy on Weakness	20.35	20.77	21.10	21.52	21.85	22.27	22.60	20.35	22.49
FFBL	46.36	Buy on Weakness	43.39	44.79	45.58	46.98	47.77	49.17	49.96	44.04	48.68
FFC	187.08	Buy on Weakness	178.47	181.74	184.41	187.68	190.35	193.62	196.29	177.73	196.43
HBL	114.11	Buy on Weakness	112.21	113.10	113.61	114.50	115.01	115.90	116.41	108.40	119.82
HUBC	35.50	Buy on Weakness	34.83	35.14	35.32	35.63	35.81	36.12	36.30	33.73	37.28
ICI	139.20	Sell on Strength	125.28	131.97	135.58	142.27	145.88	152.57	156.18	132.24	146.16
KAPCO	41.87	Buy on Weakness	41.08	41.29	41.58	41.79	42.08	42.29	42.58	39.78	43.96
LOTPTA	8.39	Buy on Weakness	7.61	7.97	8.18	8.54	8.75	9.11	9.32	7.39	9.39
LUCK	86.00	Sell on Strength	82.60	84.06	85.03	86.49	87.46	88.92	89.89	81.70	90.30
MCB	169.87	Buy on Weakness	157.53	160.89	165.38	168.74	173.23	176.59	181.08	161.38	178.36
MLCF	2.10	Buy on Weakness	1.97	2.01	2.06	2.10	2.15	2.19	2.24	1.10	3.10
NBP	43.45	Buy on Weakness	41.93	42.62	43.03	43.72	44.13	44.82	45.23	41.28	45.62
NCL	18.75	Buy on Weakness	17.33	18.00	18.37	19.04	19.41	20.08	20.45	17.75	19.75
NCPL	14.39	Buy on Weakness	13.91	14.05	14.22	14.36	14.53	14.67	14.84	13.39	15.39
NETSOL	8.66	Sell on Strength	8.23	8.41	8.54	8.72	8.85	9.03	9.16	7.66	9.66
NML	45.78	Buy on Weakness	43.65	44.63	45.20	46.18	46.75	47.73	48.30	43.49	48.07
NPL	14.06	Buy on Weakness	13.14	13.48	13.77	14.11	14.40	14.74	15.03	13.06	15.06
NRL	236.81	Buy on Weakness	217.54	226.27	231.54	240.27	245.54	254.27	259.54	224.97	248.65
OGDC	151.84	Buy	147.39	148.95	150.39	151.95	153.39	154.95	156.39	144.25	159.43
POL	359.90	Buy on Weakness	350.93	354.97	357.43	361.47	363.93	367.97	370.43	341.91	377.90
PPL	177.01	Buy on Weakness	172.84	174.67	175.84	177.67	178.84	180.67	181.84	168.16	185.86
PSO	257.65	Buy	244.90	248.95	253.30	257.35	261.70	265.75	270.10	244.77	270.53
PTC	11.51	Buy on Weakness	11.20	11.30	11.41	11.51	11.62	11.72	11.83	10.51	12.51
SHEL	197.72	Buy on Weakness	189.61	193.31	195.51	199.21	201.41	205.11	207.31	187.83	207.61
UBL	57.60	Buy	54.35	55.20	56.40	57.25	58.45	59.30	60.50	54.72	60.48

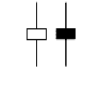
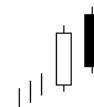
R1 = First Resistance
S1 = First Support

R2 = Second Resistance
S2 = Second Support

R3 = Third Resistance
S3 = Third Support

Glossary of Terms

- **Doji Star:** a *Spinning Top* which gaps above or below the previous candle. It is a reversal signal, which requires a confirmation from the next candle. If the Doji star gaps above the previous green candle, it is a bearish signal indicating a top and vice versa.
- **Dark Cloud Cover:** A long white candlestick is followed by a black candlestick. The black candlestick opens above the white candlestick's high and closes well into the white candlestick's body.
- **Inverted Hammer:** A candlestick with a long upper shadow and a small body formed in a downtrend. The long upper shadow and small real body at the bottom of the trading range are cause for concern by the bears. They wonder if this is the end of the downtrend and take measures to protect their gains. If the next day opens above the body of the Inverted Hammer, then expectations could be for shorts to cover and propel a reversal rally.
- **Bullish Piercing Line:** A bottom reversal signal. A red candlestick followed by a green candlestick that opens lower than the red candlestick's low, but closes more than halfway into the red body. The gap down on the 2nd day perpetuates the downtrend. However, the 2nd day's close is above the midpoint of the 1st day's body. This suggests to the bears that a bottom could be forming. The more penetration of the close on the 2nd day to the 1st day's body, the stronger the reversal signal.
- **Hanging Man:** A small body (white or black) near the high with a long lower shadow with little or no upper shadow. The lower shadow should be two or three times the height of the body. It is a bearish formation during an uptrend.
- **Shooting Star:** A single day pattern that can appear in an uptrend. It opens higher, trades much higher, then closes near its open. It looks just like the Inverted Hammer except that it is bearish.
- **Spinning Top:** a candle with a small gap, negative or positive, between the open and close. Spinning tops usually indicate a trend reversal, but require a confirmation from the next candle. If they are formed at the peak of a rally, they usually indicate a top and vice versa.
- **Engulfing Bearish Formation:** A small green candle followed by and contained within a large red candle. This is usually an indication of a top.
- **Engulfing Bullish Formation:** A small red body followed by and contained within a large green body.
- **Bullish Divergence:** occurs when prices reach a new low but an oscillator or RSI reaches a higher bottom than it reached during its previous decline. This is known as a Class A bullish divergences. Class A bullish divergences are often the best signals of an impending sharp rally.
- **Relative Strength Index (RSI):** The Relative Strength Index (RSI) is a popular oscillator used by traders. The name "Relative Strength Index" is slightly misleading as the RSI does not compare the relative strength of two securities, but rather the internal strength of a single security. A more appropriate name might be "Internal Strength Index." The RSI is a fairly simple formula, but is difficult to explain without pages of examples.
- **The Moving Average Convergence/Divergence indicator (MACD):** is calculated by subtracting 26-period exponential moving average from 12-period exponential moving average. A 9-period dotted exponential moving average (the "signal line") is automatically displayed on top of the MACD indicator line.
- **The Stochastic Oscillator (SO):** is based on stochastic mathematics. It compares where a security's price closed relative to its trading range over the last x-time periods. The Stochastic Oscillator always ranges between 0% and 100%. A reading of 0% shows that the security's close was the lowest price that the security has traded during the preceding x-time periods. A reading of 100% shows that the security's close was the highest price that the security has traded during the preceding x-time periods. The Stochastic Oscillator indicates an oversold state below 20% and an overbought state above 80%.



- **Bollinger Bands:** is a type of envelope developed by John Bollinger. Bollinger Bands are plotted at standard deviation levels above and below a moving average. The moving average generally taken is a 20-DMA, while the standard deviation count is 2. This is very good to gauge both the general direction and the volatility.

KASB Securities Limited, 5th Floor, Trade Centre, I.I. Chundrigar Road, Karachi

This report has been prepared by KASB Securities Ltd. ("KASB") and is provided for information purposes only. Under no circumstances is to be used or considered as an offer to sell or solicitation of any offer to buy. While all reasonable care has been taken to ensure that the information contained therein is not untrue or misleading at the time of publication, we make no representation as to its accuracy or completeness and it should not be relied upon as such. From time to time KASB and any of its officers or directors may, to the extent permitted by law, have a position, or otherwise be interested in any transaction, in any securities directly or indirectly subject of this report. This report is provided solely for the information of professional advisers who are expected to make their own investment decisions without undue reliance on this report and the company accepts no responsibility whatsoever for any direct or indirect consequential loss arising from any use of this report or its contents. In particular, the report takes no accounts of the investment objectives, financial situation and particular need of individuals, who should seek further advice before making any investment. This report may not be reproduced, distributed or published by any recipient for any purpose. The views expressed in this document are those of the KASB Securities & Economic Research Department and do not necessarily reflect those of KASB or its directors.